

# **Windows® 7 Upgrade Step-by-Step Guide**

For CF-U1A, CF-U1C and CF-U1E series

1. First.....	4
2. Upgrading to Windows 7 .....	5
2-1. Steps for upgrading to Windows 7.....	5
2-2. Detail procedure for upgrading.....	5
Step 1: Necessary preparations for upgrading (OS: Windows Vista) .....	6
Step 2: Backup Important Data (OS: Windows Vista) .....	6
Step 3: Downloading the programs for upgrading and extracting to the SSD (OS: Windows Vista) .....	6
Step 4: Uninstall and update of Windows Vista software (OS: Windows Vista) .....	7
(1) Uninstall Dynamic Power Performance Management for Mobile Internet Devices.....	7
(2) Uninstall Protector Suite [Only for models with Fingerprint].....	7
(3) Uninstall Infineon TPM Professional Package [Only for models with TPM chip and when this application is installed] .....	8
(4) Uninstall Bluetooth driver [Only for models with Bluetooth].....	8
(5) Uninstall other applications.....	9
(6) Uninstall Intel(R) PROSet/Wireless WiFi software [Only for models with Wireless LAN] .....	9
(7) Install Panasonic Common Components.....	9
(8) Install Hotkey Appendix.....	10
(9) Uninstall Video Driver .....	10
Step 5: Upgrade to Windows 7 (OS: Windows Vista -> Windows 7) .....	10
Step 6: Install drivers for Windows 7 (OS: Windows 7).....	12
(1) Install Video Driver .....	12
(2) Install USB Zoom Pen Tablet driver .....	13
(3) Install Hotkey driver.....	13
(4) Install Panasonic Misc driver.....	13
(5) Install Wireless LAN driver [Only for models with Wireless LAN] .....	14
(6) Install Bluetooth driver [Only for models with Bluetooth].....	14
(7) Install Wireless Switch Utility [Only for model with Wireless LAN, Bluetooth or Wireless WAN] .....	15
(8) Install Sound driver .....	15
(9) Install Camera driver [Only for models with Camera].....	15
(10) Install Dynamic Power Performance Management for Mobile Internet Devices.....	16
(11) Install USB Serial driver [Only when it is desired to use USB Serial on the Cradle (CF-VEBU11U or CF-VEBU11AU)].....	16
(12) Install USB-LAN driver for CF-VEBU11U [Only when it is desired to use USB-LAN on the Cradle (CF-VEBU11U)].....	16
(13) Install USB-LAN driver for CF-VEBU11AU [Only when it is desired to use USB-LAN on the Cradle (CF-VEBU11AU) or the Mini Dock (CF-VEBU12)] .....	17
(14) Install Smartcard reader driver [Only when it is desired to use Smartcard Reader on the Mini Dock (CF-VEBU12)] .....	17
(15) Install GPS patch [Only for models with GPS].....	17
Step 7: Windows Update (OS: Windows 7) .....	18
Step 8: Install applications for Windows 7 (OS: Windows 7).....	18

(1) Install Panasonic Hand Writing .....	18
(2) Install Infineon TPM Professional Package [Only for models with TPM chip] .....	18
(3) Install Fingerprint driver and Application [Only for models with Fingerprint module] .....	19
3. Appendix .....	20
3-1. About Adobe Reader .....	20
4. Restrictions.....	20
4-1. INDEMNIFICATION.....	20
4-2. Revision history .....	20

## 1. First

This document provides the steps to use when **upgrading for CF-U1A, CF-U1C and CF-U1E series (except for 16GB SSD model) from the Microsoft Windows Vista® Business operating system (32-bit) to Windows® 7 (32-bit).**

Before upgrading, please confirm information such as restrictions after upgrading to Windows® 7 in the web page of "Windows® 7 support evaluation information". \*

**To upgrade from Windows XP to Windows 7, “clean install” is required.**

**And for CF-U1 with 16GB SSD is also required to clean install because there is not enough free space on drive C.**

(Only for models with Bluetooth, Wireless LAN, or Wireless WAN) During upgrading, you will be prompted to turn on the wireless switch. You must start upgrading where you are allowed to emit such radio signals.

**In some cases, you should not upgrade to Windows® 7. Read all documentation before you start upgrading your OS.**

### **Windows® 7 Support and Upgrade Information**

<http://pc-dl.panasonic.co.jp/itn/support/win7info.html>

In addition, please begin upgrading after printing this document out beforehand.

*\*) Windows® and Windows Vista® are trademarks of Microsoft group companies. In the following instructions, Windows 7 stands for Windows® 7, and Windows Vista stands for Windows Vista®.*

## 2. Upgrading to Windows 7

### 2-1. Steps for upgrading to Windows 7

Please perform upgrading with the following steps.

Step	Work contents	OS environment
Step 1	Necessary preparations for upgrading	Windows Vista
Step 2	Backup important data	Windows Vista
Step 3	Downloading the programs for upgrading and extracting to the SSD	Windows Vista
Step 4	Uninstallation of Windows Vista applications	Windows Vista
Step 5	Upgrade to Windows 7	Windows Vista -> Windows 7
Step 6	Installation of the drivers for Windows 7	Windows 7
Step 7	Windows Update	Windows 7
Step 8	Installation of the applications for Windows 7	Windows 7

Detail procedure for each step is described in 2-2.

The procedure described in this guide introduces the update steps for preinstalled application and drivers.

- [Only for model with Wireless LAN]

**Caution**

Intel® PROSet for Windows 7 is not released.

The following functions are supported by Intel® PROSet.

EAP-SIM EAP-TTLS LEAP EAP-FAST EAP-PEAP-GTC EAP-AKA  
CCKM CCX

And disabling "802.11a" by Standard User is supported by Intel® PROSet.

If you need to use these functions, you should not upgrade to Windows 7 until Intel® PROSet for Windows 7 is released.

### 2-2. Detail procedure for upgrading

**All of the steps (download the upgrade programs, extracting files, and installing the drivers and applications) should be performed by the same administrator account.**

**Caution**

When using user name included "@" mark before or after the name such as "@username" or "username@" before upgrading to Windows 7, you may not be able to log on using the name after upgrading to Windows 7.

If you happened to use "@" mark before or after the name, create a new user account without "@" mark as administrator. If you just change the existing user account to different user name, it won't fix the problem.

### **Step 1: Necessary preparations for upgrading (OS: Windows Vista)**

Prepare following items before upgrading.

- AC Adaptor
- Battery Pack (Insert to your PC when upgrading.)
- Setup DVD-ROM for Windows 7 Professional or Ultimate (32-bit)
- Product Recovery DVD-ROM for your PC.
- External DVD Drive
- Information for Windows 7 regarding the applications that user installed and the peripherals user used for PC.
- Cradle (Use if available.)
- USB Keyboard (For 10-key model, it is necessary to input a product key.)
- USB Mouse (Recommend to use for the operation before installing Windows 7 drivers.)

### **Step 2: Backup Important Data (OS: Windows Vista)**

You should back up files that you created in the internal drive (SSD) to a safe location (to the external media – external hard drive, memory card, re-writable DVD and so on), before upgrading to Windows 7.

It is strongly recommended to create a backup of the whole C drive using “Windows Complete PC backup”.

Some settings for the applications cannot succeed the settings which are set on the Windows Vista. Please write down the necessary settings before upgrading. And set the necessary setting again after setup of Windows 7 and the applications for Windows 7.

### **Step 3: Downloading the programs for upgrading and extracting to the SSD (OS: Windows Vista)**

- 1) Download the update programs for your PC from the Support Web, and save them to the SSD or external media (e.g. external hard drive, memory card, rewritable DVD and so on).

Those downloaded files are different depending on the model.

Please download the files for the corresponding model from the download page of each model.

- 2) Extract all of the downloaded files according to the following procedure.
  - (1) Double-click the downloaded file.
  - (2) At [User Account Control] screen, click [Allow].
  - (3) When the license agreement appears, read carefully the license agreements, and then click [Yes(Y)].
  - (4) When the [Destination Location] screen appears, you don't need to change from default destination.  
The default destination is **[c:\Util2]**.  
Click [OK].
  - (5) Wait up to 30 seconds, then the extracting finishes.  
The message [Unpacking of files completed.] appears when extracting finishes.  
Click [OK].

### **Caution**

**[Only for models with Bluetooth]**

**For extracting the file “bluet\_ver7.00.08(p)\_xxxxxxx\_d091288.exe”, wireless switch (WIRELESS) should be turned on.**

#### **Step 4: Uninstall and update of Windows Vista software (OS: Windows Vista)**

Uninstall the programs that do not work on the Windows 7 environment, and the programs that cause the problems for upgrading to Windows 7.

Some applications that were installed on the Windows Vista environment may cause the problems when upgrading. Uninstall these programs manually before setup Windows 7.

Following applications preinstalled on CF-U1A, CF-U1C and CF-U1E Series should be uninstalled.

#### **(1) Uninstall Dynamic Power Performance Management for Mobile Internet Devices**

- 1) Click [Control Panel] – [Uninstall a program].
- 2) Select [Dynamic Power Performance Management for Mobile Internet Devices] and click [Uninstall/Change].
- 3) At the [User Account Control] screen, click [Continue].
- 4) At the [Welcome to the Uninstallation Program] screen, click [Next>].
- 5) When the message [Click Next to continue.] appears, click [Next].
- 6) When the [Uninstallation Is Complete] screen appears, select [Yes, I want to restart this computer now.] and click [Finish].
- 7) Windows restarts.

#### **(2) Uninstall Protector Suite [Only for models with Fingerprint]**

If the PC is upgraded to Windows 7 without uninstalling this program, the setup of Windows 7 doesn't proceed properly and setup isn't completed. Therefore, uninstall it before upgrading to Windows 7.

And, change the setting to not use TPM beforehand for the registered fingerprint data. Change settings and uninstall software according to the following procedure.

##### 2-1. Change settings to not use TPM

###### Protector Suite QL 5.6

- 1) Click [Start] – [All programs] - [Protector Suite QL] – [Control Center].
- 2) Click [Fingerprints] - [Enroll or Edit Fingerprints].
- 3) At the [User Enrollment] screen, click [Next>].
- 4) At the [Verify] screen, swipe your finger or enter Windows password, and then click [Next>].
- 5) At the [Hints for Fingerprint Enrollment] screen, remove the check mark from [Run interactive tutorial] and click [Next>], [Next>],... up to the [Advanced Security] screen.
- 6) At the [Advanced Security] screen, remove the check mark from [Enable Advanced Security for the current user] and click [Next>].
- 7) At the [Finalization] screen, click [Finish].

##### 2-2. Export Fingerprint data

If it is desired to use the registered fingerprint data after upgrading to Windows 7, export fingerprint data first. After upgrading to Windows 7 and installing the fingerprint software, the data needs to be imported.

###### Protector Suite QL 5.6

- 1) Click [Start] – [All programs] - [Protector Suite QL] – [Control Center].
- 2) Click [Fingerprint] - [Import or Export User Data].
- 3) Select [Export] and click [OK].

By following the screen procedure, enter the destination of the data and password to save the data.

### 2-3. Uninstall Protector Suite

- 1) Click [Control Panel] - [Uninstall a program].
- 2) Select [Protector Suite xxxx] and click [Change].
- 3) Select [Remove].
- 4) Select [Remove all Protector Suite xxxx data] and click [Next>].
- 5) Click [Next>].
- 6) At the [User Account Control] screen, click [Allow].
- 7) When the message [. . . successfully uninstalled.] appears, click [Finish].
- 8) At the message [You must restart your system . . .], click [Yes].
- 9) Windows restarts.

## **(3) Uninstall Infineon TPM Professional Package [Only for models with TPM chip and when this application is installed]**

### 3-1. Decrypt EFS

If encrypted folders exist, decrypt them before uninstalling TPM Professional Package.

- (1) Right-click encrypted folder in explorer.
- (2) Click decrypt, and type basic user password as requested.
- (3) Repeat steps (1)-(2) to all encrypted folders.
- (4) Repeat step (3) in all accounts on PC.

### 3-2. Decrypt PSD

- (1) Reboot PC
- (2) Right click TPM icon in task tray
- (3) Click [Personal Secure Drive] - [Load], and type basic user password as requested.
- (4) Copy all contents in PSD and transfer to an unencrypted folder such as Documents in local disk drive.
- (5) Repeat steps (2)-(4) in all accounts on PC.

### 3-3. Uninstall TPM software (TPM Professional Package)

- (1) Click [Control Panel] - [Uninstall a program].
- (2) Select [Infineon TPM Professional Package] and click [Uninstall].
- (3) At the [Programs and Features] screen, click [Yes].
- (4) At the [User Account Control] screen, click [Allow].
- (5) In the middle of uninstallation, user may be asked whether to open Settings tool to disable TPM, press [no] to proceed.
- (6) At the message [You must restart your system . . .], click [Yes].
- (7) Windows restarts.

## **(4) Uninstall Bluetooth driver [Only for models with Bluetooth]**

- 1) Turn on the wireless switch.
- 2) Click [Control Panel] - [Uninstall a program].
- 3) Select [Bluetooth Stack for Windows by Toshiba] and click [Uninstall].

- 4) At the [Programs and Features] screen, click [Yes].
- 5) At the [User Account Control] screen, click [Allow].
- 6) When the message [Are you sure you want to delete all your Bluetooth connection settings ....?] appears, click [Yes].

#### **(5) Uninstall other applications**

If the following applications are listed on [Control Panel] – [Uninstall a program], uninstall in order.

**Wireless Switch Utility** (Necessary to turn on the wireless switch when uninstalling this program.)

**Panasonic Hand Writing**

**Hotkey Appendix**

**Panasonic Common Components**

\* Uninstall Panasonic Common Components at the end.

- 1) Click [Control Panel] – [Uninstall a program].
- 2) Select the desired application to uninstall and click [Uninstall] or [Uninstall/Change].
- 3) If the [User Account Control] screen appears, click [Allow] or [Continue].
- 4) Follow the messages displayed and proceed uninstalling.  
When the message [Do you want to completely remove the selected application and all of its features?] displayed, click [OK] or [Yes].  
User may be required to click [Finish] or to restart PC.
- 5) **After all necessary applications are uninstalled, restart Windows.**

#### **(6) Uninstall Intel(R) PROSet/Wireless WiFi software [Only for models with Wireless LAN]**

This application doesn't work properly. So please uninstall the following procedure.

- 1) Click [Control Panel] – [Uninstall a program].
- 2) Select [Intel(R) PROSet /Wireless WiFi Software] and click [Change].
- 3) At the [Welcome to the InstallShield Wizard ...] screen, Click [Next>].
- 4) Select [Remove] and click [Next>].
- 5) Select [Remove] and click [Next>].
- 6) At the [User Account Control] screen, click [Allow].  
Uninstallation of the Application starts.
- 7) When the message [InstallShield Wizard Completed] appears, click [Finish].

\* After the uninstallation finished, restart Windows.

If the [Found New Hardware] screen appears, click [Cancel].

#### **(7) Install Panasonic Common Components**

- 1) Click [Start] - [Computer], and browse [C:\Util2\pcommon] folder.
- 2) Double-click setup(.exe) file (displayed [Application] as [Type]).
- 3) At the [User Account Control] screen, click [Allow].
- 4) At the [Welcome to the InstallShield Wizard ...] screen, Click [Next>].
- 5) Installation of the Application starts.

- 6) When the message [InstallShield Wizard Complete] appears, click [Finish].

#### **(8) Install Hotkey Appendix**

- 1) Click [Start] - [Computer], and browse [C:\Util2\hkeyapp] folder.
- 2) Double-click setup(.exe) file (displayed [Application] as [Type]).
- 3) At the [User Account Control] screen, click [Continue].
- 4) At the [Welcome to the InstallShield Wizard ...] screen, Click [Next>].
- 5) At the [Ready to Install the Program] screen, Click [Install].
- 6) Installation of the Application starts.
- 7) At the [InstallShield Wizard Complete] screen, select [Yes, I want to restart my computer now.] and then click [Finish].
- 8) Windows restarts.

#### **(9) Uninstall Video Driver**

- 1) Click [Control Panel] - [Uninstall a program].
- 2) Select [Intel(R) Graphics Media Accelerator 500] and click [Uninstall/Change].
- 3) At the [User Account Control] screen, click [Continue].
- 4) At the [Welcome to the Uninstallation Program] screen, click [Next>].
- 5) Driver Uninstallation starts.
- 6) When the message [Click Next to continue.] appears, click [Next]
- 7) When the [Uninstallation Is Complete] screen appears, select [Yes, I want to restart this computer now.] and click [Finish].
- 8) Windows restarts.

Note: Due to the uninstallation of video driver, the screen resolution will change and some dialogs may be displayed. Please close those dialogs by clicking [Cancel] or [OK] and proceed to the next step.

#### **Step 5: Upgrade to Windows 7 (OS: Windows Vista -> Windows 7)**

**Note: Make sure to follow the restrictions below until all of the procedure finishes.**

- The AC adaptor should be connected and the fully charged battery pack should be inserted.
- Any peripheral equipment should not be connected unless instruction tells to do so.

\* If the setup password is set, it is necessary to enter the password when the PC restarts automatically.

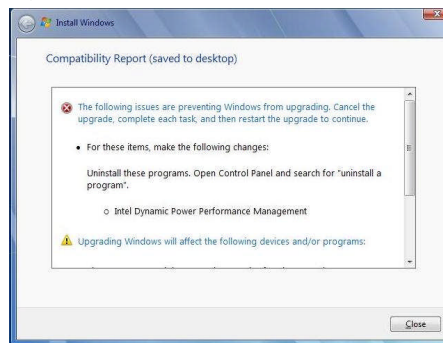
- (1) **[Only for models with GPS]** Set GPS to "Disable".
  - 1) Turn on the computer.
  - 2) Press [F2] (for 10-key models, [DEL] key), enter the setup utility.
  - 3) Select [Serial Port Configuration] in [Advanced] menu and set [GPS] to [Disabled].
  - 4) Press [F10], and press [Enter]. (For 10-key models, select [Exit] – [Save Values and Reboot].)
- (2) Connect the external DVD drive to your PC.
- (3) Insert the Windows 7 Setup DVD to the DVD drive.
- (4) [AutoPlay] window appears automatically, then click [Run setup.exe]  
If [AutoPlay] window does not open automatically, click [Start] – [Computer] and double click the icon of DVD

drive.

- (5) At the [User Account Control] screen, click [Continue].
- (6) At [Install Windows] screen, click [Install now].
- (7) At [Get important updates for installation] screen,  
if PC can access the internet, click **[Go online to get the latest updates for installation (recommended)]**.  
If PC cannot access the internet, click **[Do not get the latest updates for installation]**.
- (8) At [Please read the license terms] screen, carefully read the license terms and add a check mark for [I accept the license terms], and then click [Next].
- (9) At [Which type of installation do you want?] screen, click **[Upgrade]** to perform an upgrade to your existing installation of Windows.
- (10) [Checking compatibility...] screen appears.

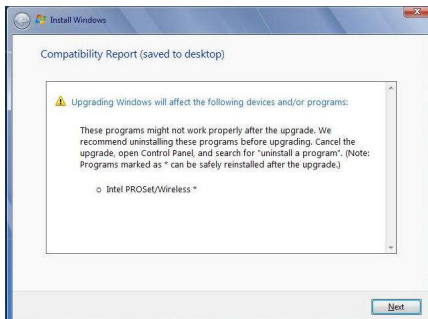
**<Caution>**

**If the message [The following issues are preventing Windows from upgrading. ...] appears at the [Compatibility Report] screen, setup cannot proceed until uninstalling those programs.**



**If this message appears, cancel the setup and uninstall the all of displayed programs, and then start setup again from the procedure #(1).**

- (11) If the message [Upgrading Windows will affect the following devices and/or programs:] appears, click [Next].



- (12) The message [Upgrading Windows...] appears and starts upgrading.

It takes about 1 or 2 hours for upgrading and restarts two or three times repeatedly.

During upgrade, particular operations are not necessary by user..

(If the setup password is set, it is necessary to enter the password when the PC restarts.)

- (13) At [Type your Windows product key] screen, input the product key written on the Windows 7 package, then click [Next].  
For 10-key models, remove USB DVD drive from the USB port and connect USB keyboard to complete the rest.  
Screen resolution and color will become normal after installing Video driver at Step 6 (1).
- (14) When the message [Help protect your computer and improve Windows automatically] appears, click [Use recommended settings].
- (15) At the [Review your time and date settings] screen, then click [Next] or press Enter key.  
You can change time zone, date, and time settings after installing Video driver. (Click time on the Task bar, click [Change date and time settings ...] to change these settings.)
- (16) If [Join a wireless network] window appears, click [Skip].
- (17) At the logon Screen, log on **as the administrator account who extracted the upgrade programs.**  
(If the existing account is only one and password is not set, the logon screen doesn't appear.)  
Desktop for Windows 7 appears.  
It takes a while to finish the initial settings even after the desktop appears.  
Do not touch the keyboard and the touchpad until the SSD access completely stops.
- (18) Eject the Windows 7 Setup DVD from the DVD drive.
- (19) If [Unable to create object of lgfxExt...] dialog appears, click [OK].

## Step 6: Install drivers for Windows 7 (OS: Windows 7)

### (1) Install Video Driver

- 1) Click [Start] – [Computer], and then browse [C:\Util2\drivers\video] folder
- 2) Double-click setup(.exe).
- 3) At [User Account Control] screen, click [Yes].
- 4) When the message [Welcome to the Setup Program] appears, click [Next>].
- 5) At the [License Agreement] screen, read the license agreement carefully, and then click [Yes].
- 6) At the [Readme File Information] screen, click [Next>].
- 7) When the message [Click Next to continue.] appears, click [Next].
- 8) When the message [Would you like to restart the computer now?] appears, select [Yes, I want to restart this computer now.] and click [Finish].
- 9) After the PC restarts, browse [C:\Util2\drivers\video] folder again.
- 10) Right-click **VGAup(.bat)**, and select [Run as administrator].
- 11) At the [User Account Control] screen, click [Yes].
- 12) At the [User Account Control] screen, click [Yes].
- 13) When “Command prompt” screen disappears, restart Windows manually.
- 14) Change the theme to turn off Windows Aero.
  - a. Right-click [Start] – [Computer] and select [Properties] to open [View basic information about your computer] window.

- b. If [System rating is not available.] is displayed for the [Rating:] in [System], click [System rating is not available.].

**If the score has already been displayed in [Rating:], jump to the Step e. to proceed.**

- c. [Rate and improve your computer's performance] screen appears, click [Rate this computer].
- d. Wait for a few minutes to finish rating. Once the basic score is displayed and Aero theme is enable, close the [Rate and improve your computer's performance] screen.
- e. Click [Start] - [Control Panel] - [Appearance and Personalization] - [Change the theme].
- f. Click the [Windows 7 Basic] theme in [Basic and High Contrast Themes (6)].
- g. Close the [Change the visuals and sounds on you r computer] window.

**Caution:** If you create a new user, you need to repeat step (e)-(g) to turn off Windows Aero.

## **(2) Install USB Zoom Pen Tablet driver**

- 1) Click [Start] - [Computer], and then browse [C:\Util2\drivers\tscreen] folder.
- 2) Double-click SetupZM(.exe).
- 3) At the [User Account Control] screen, click [Yes].
- 4) When the message [Do you wish to continue?] appears, click [Yes].
- 5) When the message [The installation is now complete.] appears, click [OK].
- 6) When the message [You must restart your computer... ] appears, click [Restart Now].
- 7) After Windows restarts, browse [C:\Util2\drivers\tscreen] folder again.
- 8) Double-click FujitsuTS(.reg).
- 9) At the [User Account Control] screen, click [Yes].
- 10) When the message [Are you sure you want to continue?] appears, click [Yes].
- 11) At the [Registry Editor] screen for the information, click [OK].
- 12) Restart Windows.

## **(3) Install Hotkey driver**

- 1) Click [Start] and right -click [Computer] to select [Properties], and click [Device Manager].
- 2) If [User Account Control] screen appears, click [Yes].
- 3) Double-click [System devices] - [Hotkey Driver for Panasonic PC].
- 4) At the [Driver] tab, click [Update Driver...]
- 5) Click [Browse my computer for driver software].
- 6) At [Search for driver software in this location:], enter [C:\Util2\drivers\hotkey], and click [Next].
- 7) When the message [Windows has successfully updated your driver software] appears, click [Close].
- 8) Click [Close].
- 9) When the message [Do you want to restart your computer now?] appears, click [Yes].  
Windows restarts.

## **(4) Install Panasonic Misc driver**

- 1) Click [Start] and right -click [Computer] to select [Properties], and click [Device Manager].
- 2) If [User Account Control] screen appears, click [Yes].
- 3) Double-click [System devices] - [Panasonic Misc Driver].
- 4) At the [Driver] tab, click [Update Driver...]
- 5) Click [Browse my computer for driver software].
- 6) At [Search for driver software in this location:], enter [C:\Util2\drivers\newmisc], and click [Next].

- 7) When the message [Windows has successfully updated your driver software] appears, click [Close].
- 8) Click [Close].
- 9) When the message [Do you want to restart your computer now?] appears, click [Yes].  
Windows restarts.

**(5) Install Wireless LAN driver [Only for models with Wireless LAN]**

Confirm the installed driver version by following steps.

- 1) Click [Start] and right -click [Computer] to select [Properties], and click [Device Manager].
- 2) If [User Account Control] screen appears, click [Yes].
- 3) Double-click [Network adapters] - [Intel(R) WiFi Link 5100 AGN].
- 4) Click the [Driver] tab and confirm [Driver Version:].

According to the version of the driver, choose (5-1) or (5-2).

(5-1) When the version of the Wireless LAN driver is 12.4.3.9, follow the steps below.

- 1) Click [Start] and right -click [Computer] to select [Properties], and click [Device Manager].
- 2) If [User Account Control] screen appears, click [Yes].
- 3) Double-click [Network adapters], right-click [Intel(R) WiFi Link 5100 AGN], and select [Uninstall].
- 4) Select [Delete the driver software for this device] and click [OK].
- 5) Restart Windows.
- 6) Log on as the administrator account.
- 7) Wait until device driver installed successfully.
- 8) Click [Start] – [Computer], and browse [C:\Util2\drivers\wlan\d090815\Win7s32] folder.
- 9) Double-click iProDifX(.exe). (displayed [Application] as [Type])
- 10) At the [User Account Control] screen, click [Yes].
- 11) [Intel(R) PRO/Wireless driver installer] screen appears, and the driver installation starts.
- 12) When the [Intel(R) PRO/Wireless driver installer] screen closes, installation completes.

(5-2)When the version of the Wireless LAN driver is NOT 12.4.3.9, follow the steps below.

- 1) Click [Start] – [Computer], and browse [C:\Util2\drivers\wlan\d090815\Win7s32] folder.
- 2) Double-click iProDifX(.exe). (displayed [Application] as [Type])
- 3) At the [User Account Control] screen, click [Yes].
- 4) [Intel(R) PRO/Wireless driver installer] screen appears, and the driver installation starts.
- 5) When the [Intel(R) PRO/Wireless driver installer] screen closes, installation completes.

**(6) Install Bluetooth driver [Only for models with Bluetooth]**

- 1) Click [Start] - [Computer] and browse [C:\Util2\drivers\bluet] folder.
- 2) Double-click setup(.exe).
- 3) At the [User Account Control] screen, click [Yes].
- 4) When the message [Welcome to the InstallShield Wizard for Bluetooth Stack for Windows by Toshiba] appears, click [Next].
- 5) At the [License Agreement] screen, read the license agreement carefully, and select [I accept the terms in the License agreement], and click [Next>].
- 6) When the message [Ready to Install the Program] appears, click [Install].
- 7) When the message [InstallShield Wizard Completed] appears, click [Finish].

- 8) When the message [You must restart your system for the configuration changes made to Bluetooth Stack for ...] appears, click [Yes].
- 9) Restart Windows.
- 10) When the [Automatic Registration] screen appears, add a check mark for [Don't show this window next time], and click [Cancel].

**(7) Install Wireless Switch Utility [Only for model with Wireless LAN, Bluetooth or Wireless WAN]**

- 1) Click [Start] – [Computer], and then browse [C:\Util2\wswitch] folder.
- 2) Double-click setup(.exe) (displayed [Application] as [Type]).
- 3) At the [User Account Control] screen, click [Yes].
- 4) At the [Welcome to the InstallShield Wizard ...] screen, Click [Next>].
- 5) At the [Ready to Install the Program] screen, Click [Install].
- 6) Installation of the Application starts.
- 7) At the [InstallShield Wizard Complete] screen, select [Yes, I want to restart my computer now.] and then click [Finish].
- 8) Windows restarts.
- 9) (For US users who have Wireless LAN model only) Click Wireless switch utility icon on taskbar and click [802.11a Disabled]. At the [User Account Control] screen, click [Yes].

**(8) Install Sound driver**

- 1) Click [Start] – [Computer] and browse [C:\Util2\drivers\sound] folder.
- 2) Double-click setup(.exe) (displayed [Application] as [Type]).
- 3) At the [User Account Control] screen, click [Yes].
- 4) At the [Setup Type] screen, select [Reinstall or Upgrade] and click [Next>].
- 5) Installation of the driver starts.
- 6) When the message [Maintenance Complete] appears, click [Finish] to restart.

**(9) Install Camera driver [Only for models with Camera]**

- 1) Click [Start] – [All Programs] – [AVEO UVC Filter Driver] – [Uninstall].
- 2) At the [User Account Control] screen, click [Yes].
- 3) At the [Welcome] screen, select [Remove] and click [Next>].
- 4) At the confirmation screen, click [Yes].
- 5) When the [Uninstall Complete] screen appears, select [Yes, I want to restart my computer now.] and click [Finish].
- 6) After the PC restarts, click [Start] – [Computer] and browse [C:\Util2\drivers\camera] folder.
- 7) Double-click E2WSAD1N30803-FilterDriver-V3.7-20091103-WHQL(.exe).
- 8) At the [User Account Control] screen, click [Yes].
- 9) Installation of the driver starts.
- 10) When the message [Installation Complete] appears, click [Finish].
- 11) Restart Windows.
- 12) Confirm the Driver version
  - a. Click [Start] and right -click [Computer] to select [Properties], and click [Device Manager].
  - b. If [User Account Control] screen appears, click [Yes].
  - c. Double-click [Imaging Devices] - [AVEO UVC PC Camera].
  - d. Click the [Driver] tab and confirm [Driver Version:]

If the Driver Version is [3.7.0.0], the driver is correctly updated.

\*) If you cannot find [Imaging Devices] - [AVEO UVC PC Camera] in [Device Manager] or the Driver Version of [AVEO UVC PC Camera] is NOT [3.7.0.0], the driver is not correctly updated.

Try Step 1) to 12) again.

#### **(10) Install Dynamic Power Performance Management for Mobile Internet Devices**

- 1) Click [Start] - [Computer], and then browse [C:\Util\drivers\dabney] folder.
- 2) Right-click Setup(.exe) and select [Properties].
- 3) Click [Compatibility] tab and check the box of [Run this program in compatibility mode for:] in [Compatibility mode], and select [Windows Vista (Service Pack 1)].
- 4) Click [OK] to close [Setup Properties] window.
- 5) Double-click Setup(.exe).
- 6) At the [User Account Control] screen, click [Yes].
- 7) At the [Welcome to the Setup Program] screen, click [Next>].
- 8) At the [Licence Agreement] screen, read the license agreement carefully, and click [Yes].
- 9) At the [Readme File Information] screen, click [Next>].
- 10) At the [SDK Installation] screen, select [Yes] and click [Next>].
- 11) When the message [Click Next to Continue.] appears, click [Next].
- 12) When the message [Would you like to restart the computer now?] appears, select [Yes, I want to restart the computer now.] and click [Finish].
- 13) Windows restarts.

#### **(11) Install USB Serial driver [Only when it is desired to use USB Serial on the Cradle (CF-VEBU11U or CF-VEBU11AU)]**

- 14) Click [Start] - [Computer], and then browse [C:\Util\drivers\usbcom] folder.
- 15) Double-click CP210xVCPInstaller(.exe).
- 16) At the [User Account Control] screen, click [Yes].
- 17) Click [Install].
- 18) Driver installation starts.
- 19) When the message [Installation completed successfully] appears, click [OK].

#### **(12) Install USB-LAN driver for CF-VEBU11U [Only when it is desired to use USB-LAN on the Cradle (CF-VEBU11U)]**

- 1) Shutdown computer and disconnect the AC adapter.
- 2) Attach the Cradle (CF-VEBU11U) and plug in the AC adapter.
- 3) Restart computer.
- 4) Click [Start] - [Computer], and then browse [C:\Util\drivers\ex\_lan\moschip\WIN32] folder.
- 5) Double-click setup(.exe).
- 6) At the [User Account Control] screen, click [Yes].
- 7) Installation of the driver starts.
- 8) After the message [Installation Successfully Completed!] appears and automatically closes, restart windows manually.

**(13) Install USB-LAN driver for CF-VEBU11AU [Only when it is desired to use USB-LAN on the Cradle (CF-VEBU11AU) or the Mini Dock (CF-VEBU12)]**

- 1) Shutdown computer and disconnect the AC adapter.
- 2) Attach the Cradle (CF-VEBU11AU) and plug in the AC adapter.
- 3) Restart computer.
- 4) Click [Start] - [Computer], and then browse [C:\Util2\drivers\ex\_lan\smc] folder.
- 5) Double-click install(.exe).
- 6) At the [User Account Control] screen, click [Yes].
- 7) When the message [Welcome to the LAN9500 Device Installer!] appears, click [Next>].
- 8) At the [License Agreement] screen, read carefully the license agreement, select [I accept this EULA], and then click [Next>].
- 9) When the message [Congratulations!...] appears, click [Finish].
- 10) Restart windows manually.

**(14) Install Smartcard reader driver [Only when it is desired to use Smartcard Reader on the Mini Dock (CF-VEBU12)]**

- 1) Shutdown your computer and disconnect the AC adapter.
- 2) Attach the Mini Dock (CF-VEBU12).
- 3) And plug in the AC adapter and restart your computer.
- 4) Click [Start] and right -click [Computer] to select [Properties], and click [Device Manager].
- 5) If [User Account Control] screen appears, click [Yes].
- 6) Double-click [Smart card readers] - [USB Smart Card Reader].
- 7) At the [Driver] tab, click [Update Driver...]
- 8) Click [Browse my computer for driver software].
- 9) At [Search for driver software in this location:], enter [C:\Util2\drivers\smartc\32bits], and click [Next].
- 10) When the message [Windows has successfully updated your driver software] appears, click [Close].
- 11) Click [Close], and then close the [Device Manager] window.

**\* When you finish installing all of the drivers, restart PC.**

**(15) Install GPS patch [Only for models with GPS]**

- 1) Click [Control Panel] – [Hardware and Sound] – [Power Options] – [Choose what the power button does], and change [When I press the power button] to [Shut down] for [Plugged in].
- 2) Click [Save changes] and restart computer.
- 3) Press [F2] (for 10-key models, [DEL] key), at Panasonic boot screen.
- 4) Select [Serial Port Configuration] in [Advanced] menu and set [GPS] to [Enabled].
- 5) Press [F10] and [ENTER]. (For 10-key models, select [Exit] – [Save Values and Reboot].)
- 6) In Windows, the cursor might move irregularly; try to shutdown computer by pressing Power button, and power on the computer.
- 7) Press [F2] (for 10-key models, [DEL] key), at Panasonic boot screen.
- 8) Select [Serial Port Configuration] in [Advanced] menu and set [GPS] to [Disabled].
- 9) Press [F10] and [ENTER]. (For 10-key models, select [Exit] – [Save Values and Reboot].)
- 10) In Windows, click [Start] – [Computer], and browse [C:\Util2\drivers\gps] folder.

- 11) Right-click **pininstall**(.bat), and select [Run as administrator].
- 12) At the [User Account Control] screen, click [Yes].
- 13) Click [Control Panel] – [Hardware and Sound] – [Power Options] – [Choose what the power button does], and change [When I press the power button] to [Sleep] for [Plugged in].
- 14) Click [Save changes] and restart computer.
- 15) Press [F2] (for 10-key models, [DEL] key), at Panasonic boot screen.
- 16) Select [Serial Port Configuration] in [Advanced] menu and set [GPS] to [Enabled].
- 17) Press [F10] and [ENTER]. (For 10-key models, select [Exit] – [Save Values and Reboot].)

### **Step 7: Windows Update (OS: Windows 7)**

Do settings for Internet connection, and execute Windows Update.

- 1) Click [Start] – [All Programs] – [Windows Update].
- 2) If the message [Download and install updates for your computer] appears, click [Install updates]. If it doesn't appear, click the link [Check for updates].
- 3) Follow the displayed instructions.

### **Step 8: Install applications for Windows 7 (OS: Windows 7)**

**Install the following applications only if necessary.**

#### **(1) Install Panasonic Hand Writing**

- 1) Click [Start] – [Computer], and then browse [C:\Util2\writing] folder.
- 2) Double-click setup(.exe) (displayed [Application] as [Type]).
- 3) At the [User Account Control] screen, click [Yes].
- 4) At the [Welcome to the InstallShield Wizard ...] screen, Click [Next>].
- 5) At the [Ready to Install the Program] screen, Click [Install].
- 6) Installation of the Application starts.
- 7) At the [InstallShield Wizard Complete] screen, select [Yes, I want to restart my computer now.] and then click [Finish].
- 8) Windows restarts.

#### **(2) Install Infineon TPM Professional Package [Only for models with TPM chip]**

\* The following procedure is for those who used TPM software on Windows Vista environment.

If TPM software wasn't used on Windows Vista, refer "README(.pdf)" file in [C:\util2\drivers\tpm].

- 1) Click [Start] – [Computer], and then browse [C:\util2\drivers\tpm\infineon] folder.
- 2) Double-click setup(.exe).
- 3) At the [User Account Control] screen, click [Yes].
- 4) If the [InstallShield Wizard] screen appears, click [Install].
- 5) At the [Welcome to the InstallShield Wizard for Infineon TPM...] screen, confirm [Version 3.6] is displayed and click [Next>].

- 6) At the [License Agreement] screen, read carefully the license agreement, select [I accept the terms in the License agreement], and click [Next>].
- 7) Confirm Customer Information and click [Next>].
- 8) At the [Setup Type] screen, select [Complete], click [Next>], and click [Install].  
Installation of the Application starts.
- 9) At the [InstallShield Wizard Completed] screen, click [Finish].
- 10) If the message [You must restart your system .....], click [Yes]. Windows restarts.  
\* If Readme [Release Notes] appears, close the window.
- 11) Check TPM software
  - (1) After logon, click [Start]-[All Programs]-[Infineon Security Platform Solution].
  - (2) Click [Manage Security Platform]
  - (3) Confirm Security Platform Solution version is 3.6 on [Info] tab.
- 12) Additional Information  
Encryption key and various setting are carried over from previous OS and are ready to use.

### **(3) Install Fingerprint driver and Application [Only for models with Fingerprint module]**

- 1) Click [Start] and right -click [Computer] to select [Properties], and click [Device Manager].
- 2) If the [User Account Control] screen appears, click [Yes].
- 3) Double-click [Biometric Devices] - [TouchChip Fingerprint Coprocessor].
- 4) At the [Driver] tab, click [Update Driver...]
- 5) Click [Browse my computer for driver software].
- 6) At [Search for driver software in this location:], enter [C:\Util2\drivers\fnprint], and click [Next].
- 7) When the message [Windows has successfully updated your driver software] appears, click [Close].
- 8) Click [Close], and then close the [Device Manager] window.
- 9) If the message [Do you want to restart your computer now?] appears, close the windows and click [Yes].  
Windows restarts.
- 10) Click [Start] – [Computer], and then browse [C:\Util2\drivers\fnprint\install] folder.
- 11) Double-click setup32(.exe).
- 12) At the [User Account Control] screen, click [Yes].
- 13) At the [Welcome to the Protector Suite...] screen, click [Next>].
- 14) Follow the messages displayed and click [Next>], [Next>].  
Software installation proceeds.
- 15) When the message [ ...successfully installed.] appears, click [Finish].
- 16) If the message [You must restart your system .....], click [Yes].  
Windows restarts.
- 17) If user has an exported data, click [Control Center] – [Identify] – [Account Operations] – [Import user data] and import the data by following the displayed instructions.  
If the confirmation message about deleting the current user's data, click [Yes].  
If Power-on Password was set,, click [Identify] - [Power-on Password], delete check mark for [Power-On] in [Password Types], and add a check mark for [Power-On]. Then enter the Power-On password again.

### **3. Appendix**

#### **3-1. About Adobe Reader**

The Adobe Reader which was installed in Windows Vista can be used in Windows 7 as it is.

However, the official Windows 7 which supported Adobe Reader is the version 9 or later.

Please install the latest version which will be available soon on the following website.

<http://www.adobe.com/>

### **4. Restrictions**

#### **4-1. INDEMNIFICATION**

Panasonic Corporation shall assume no indemnity obligation to the customers, hold harmless Panasonic Corporation and its subsidiaries, affiliates, directors, officers, employees, agents and independent contractors retained by Panasonic Corporation from and against any loss, cost, liability or expense (including, but not limited to, court costs and reasonable fees of attorneys and other professionals) arising out of or resulting from any use of this utility or any claim against the customers from the third party.

#### **4-2. Revision history**

8<sup>th</sup> Dec. 2009 : 1<sup>st</sup> version.